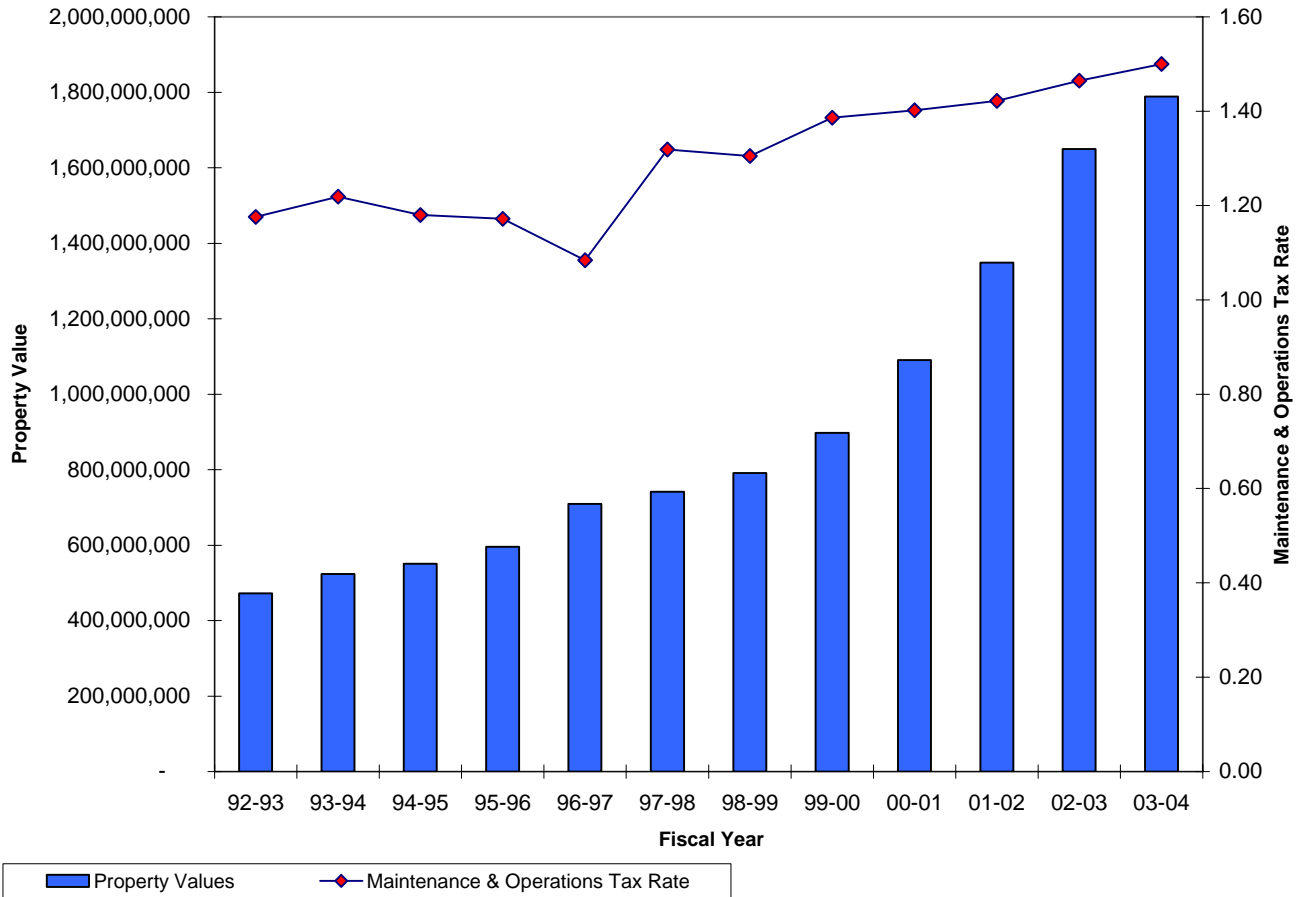


Bastrop Independent School District Property Value and Maintenance & Operations Tax Rate History



Fiscal Year	Property Value	Maintenance & Operations Tax Rate
1992-93	\$471,773,892	\$1.176
1993-94	\$423,847,197	\$1.219
1994-95	\$550,632,799	\$1.180
1995-96	\$595,961,023	\$1.172
1996-97	\$709,597,005	\$1.084
1997-98	\$741,625,884	\$1.319
1998-99	\$791,326,329	\$1.305
1999-00	\$897,709,822	\$1.386
2000-01	\$1,090,215,466	\$1.402
2001-02	\$1,348,928,171	\$1.422
2002-03	\$1,649,979,268	\$1.465
2003-04	\$1,789,026,354	1.500